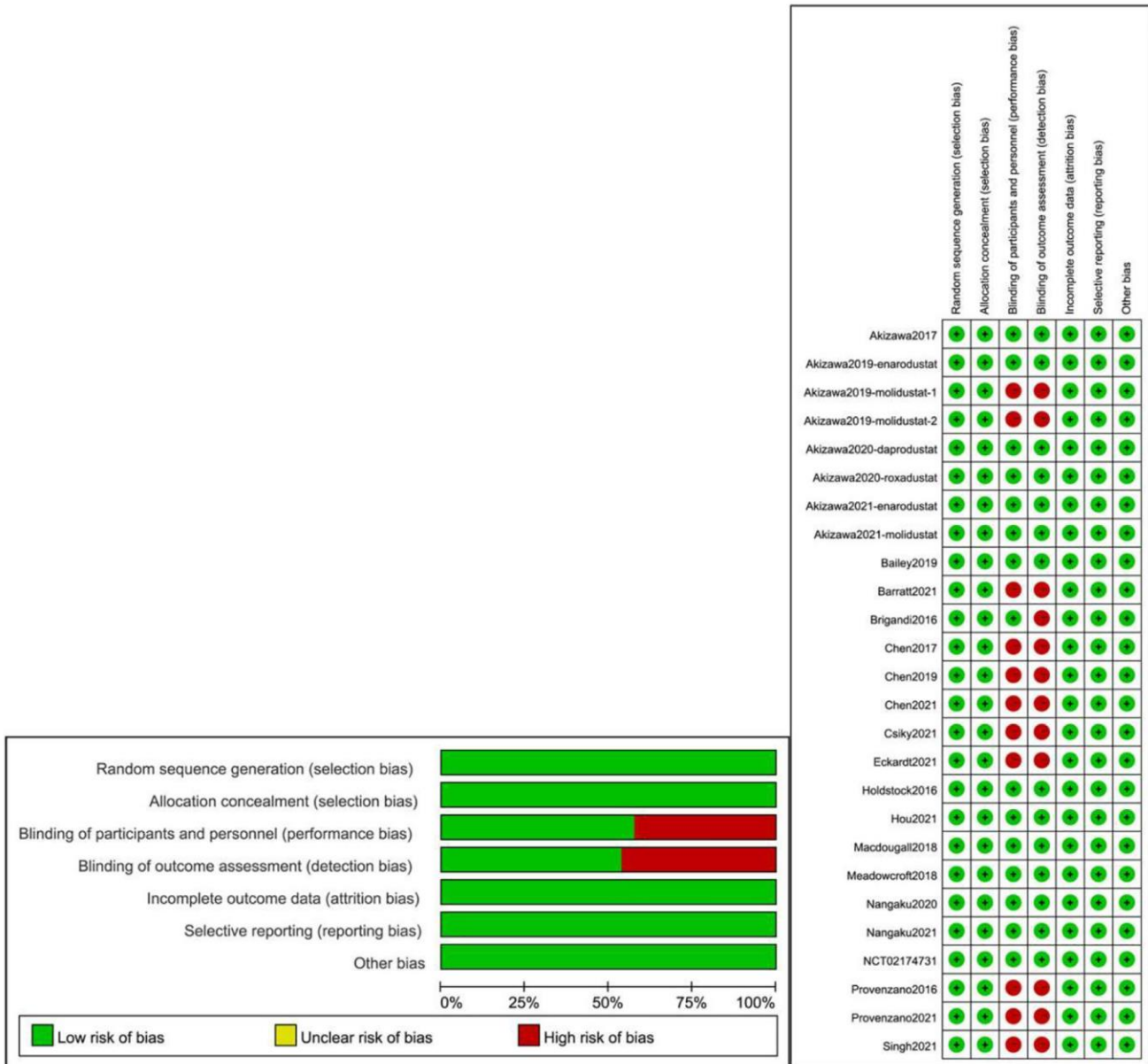
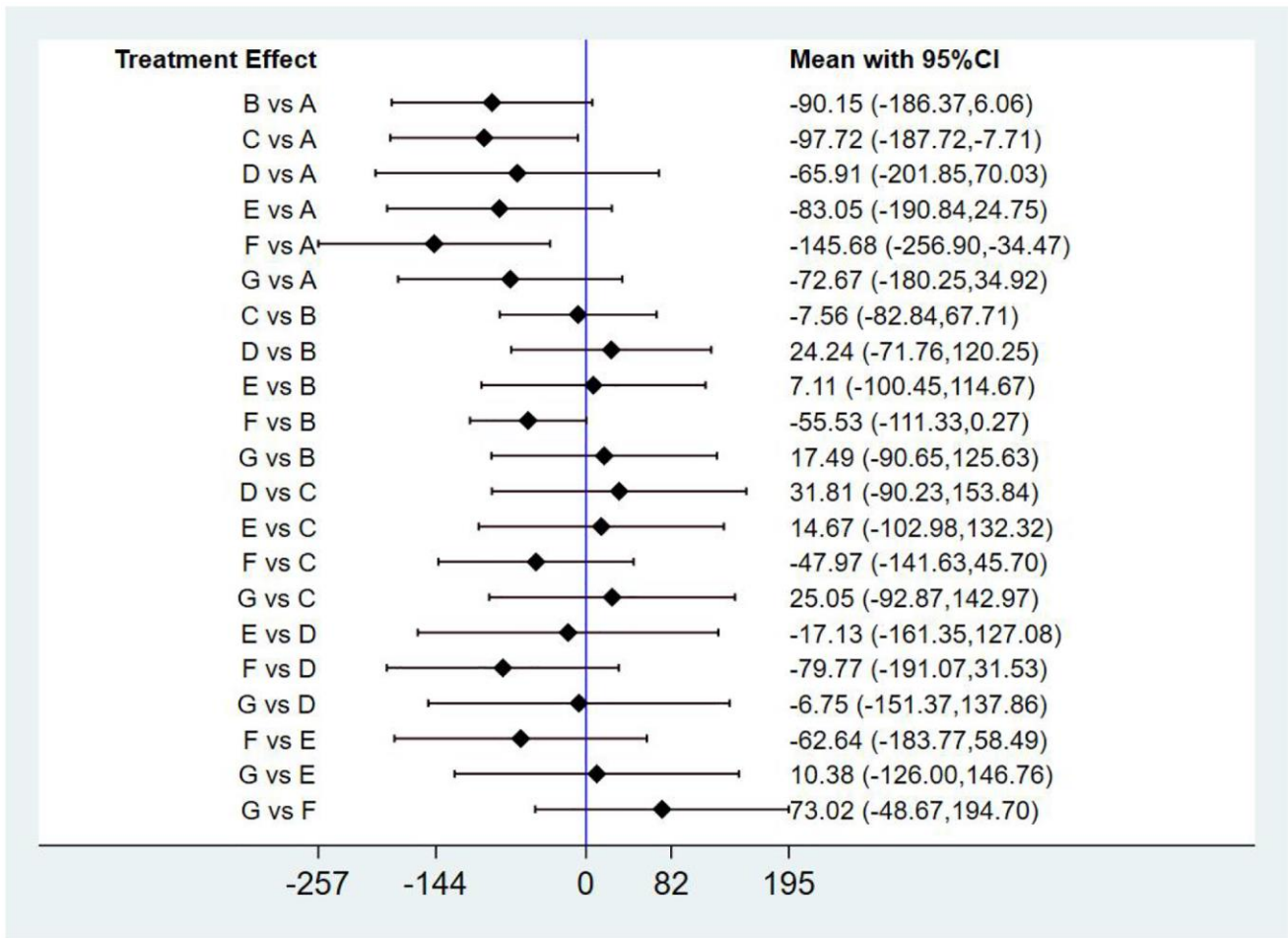


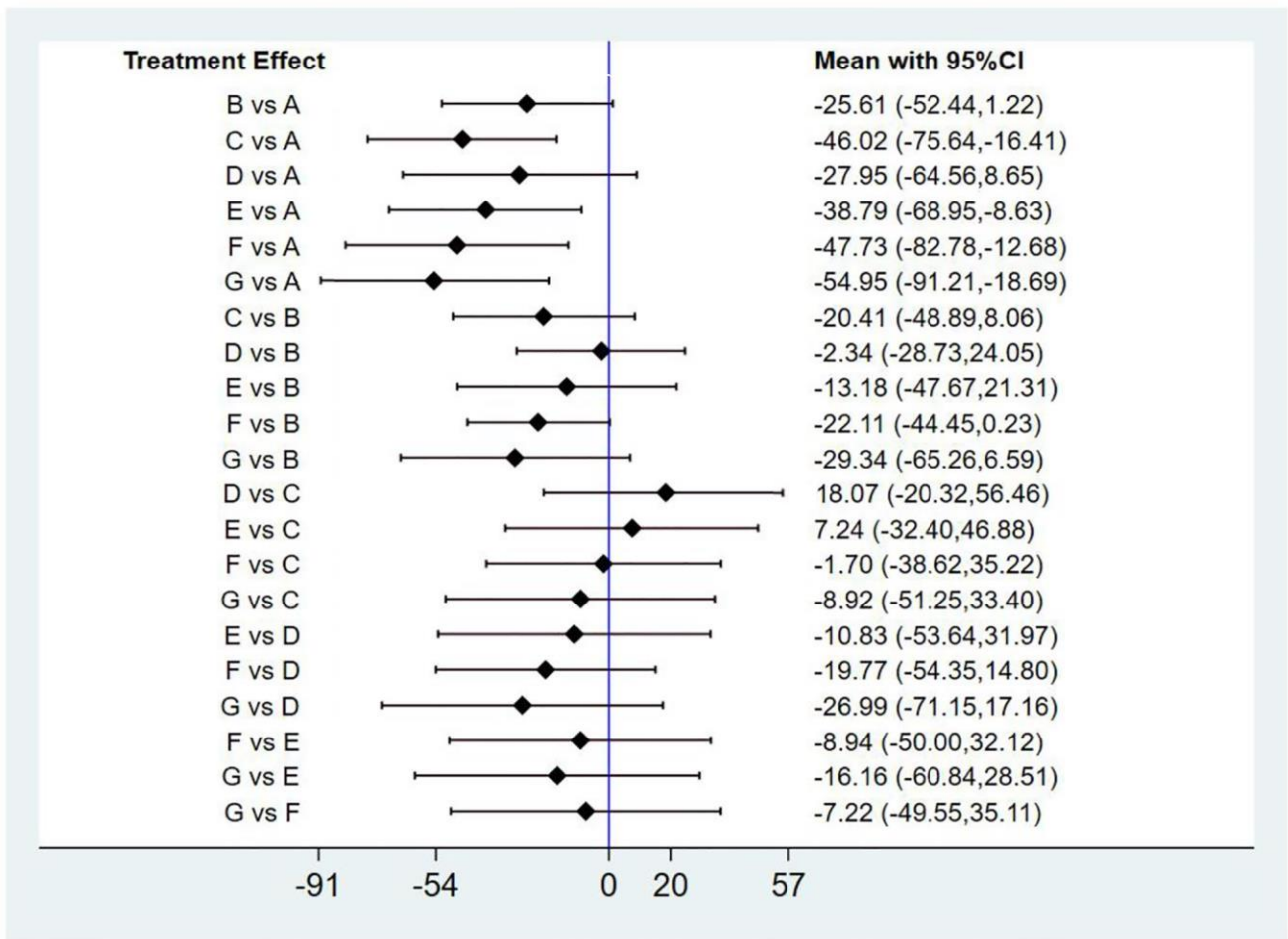
SUPPLEMENTARY FIGURES



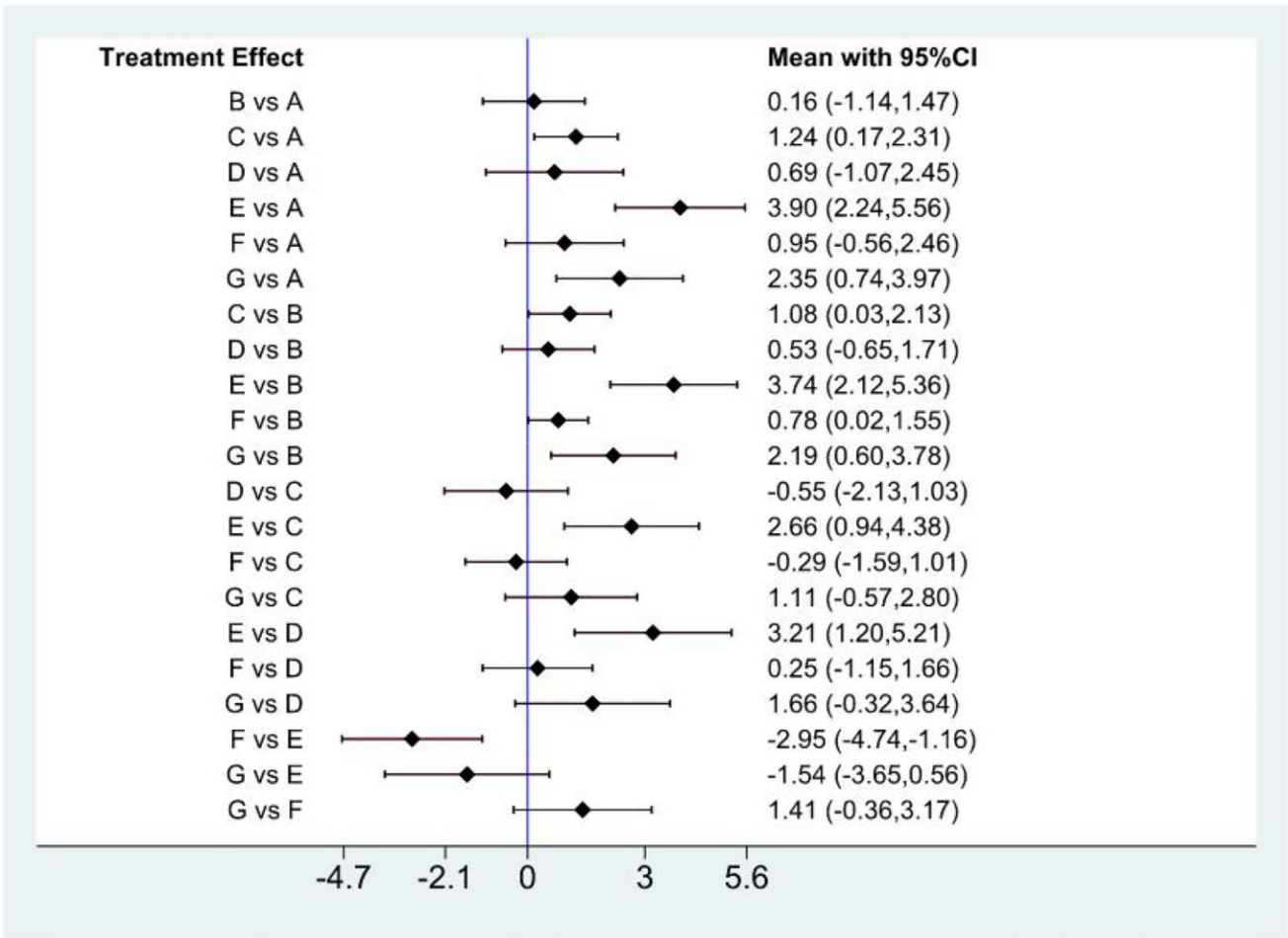
Supplementary Figure 1. Bias assessment. The Cochrane risk-of-bias tool assessed the risk of bias in included studies.



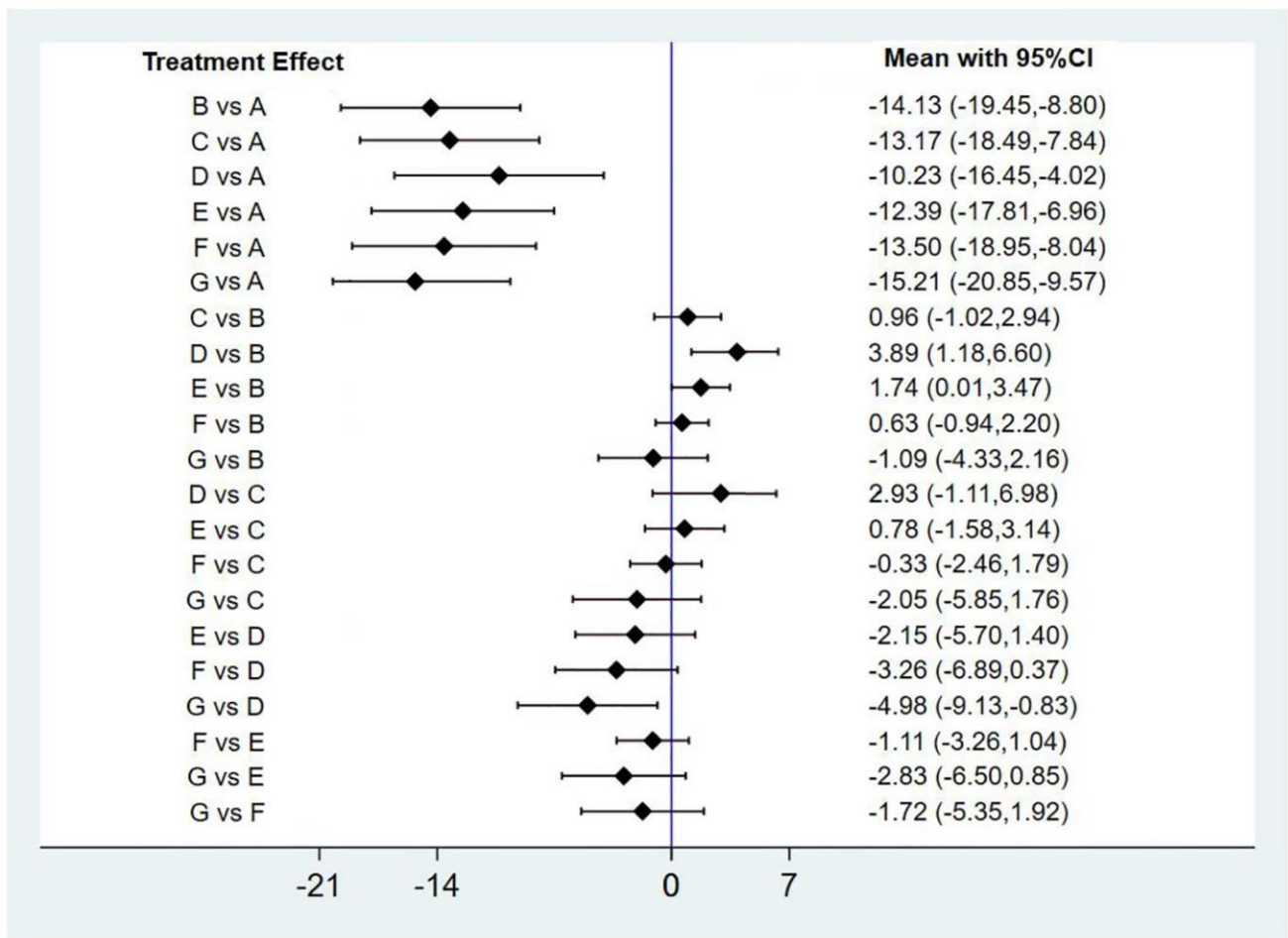
Supplementary Figure 2. Forest plot of ferritin. Abbreviations: A: placebo/control; B: ESAs; C: daprodustat; D: molidustat; E: vadadustat; F: roxadustat; G: enarodustat.



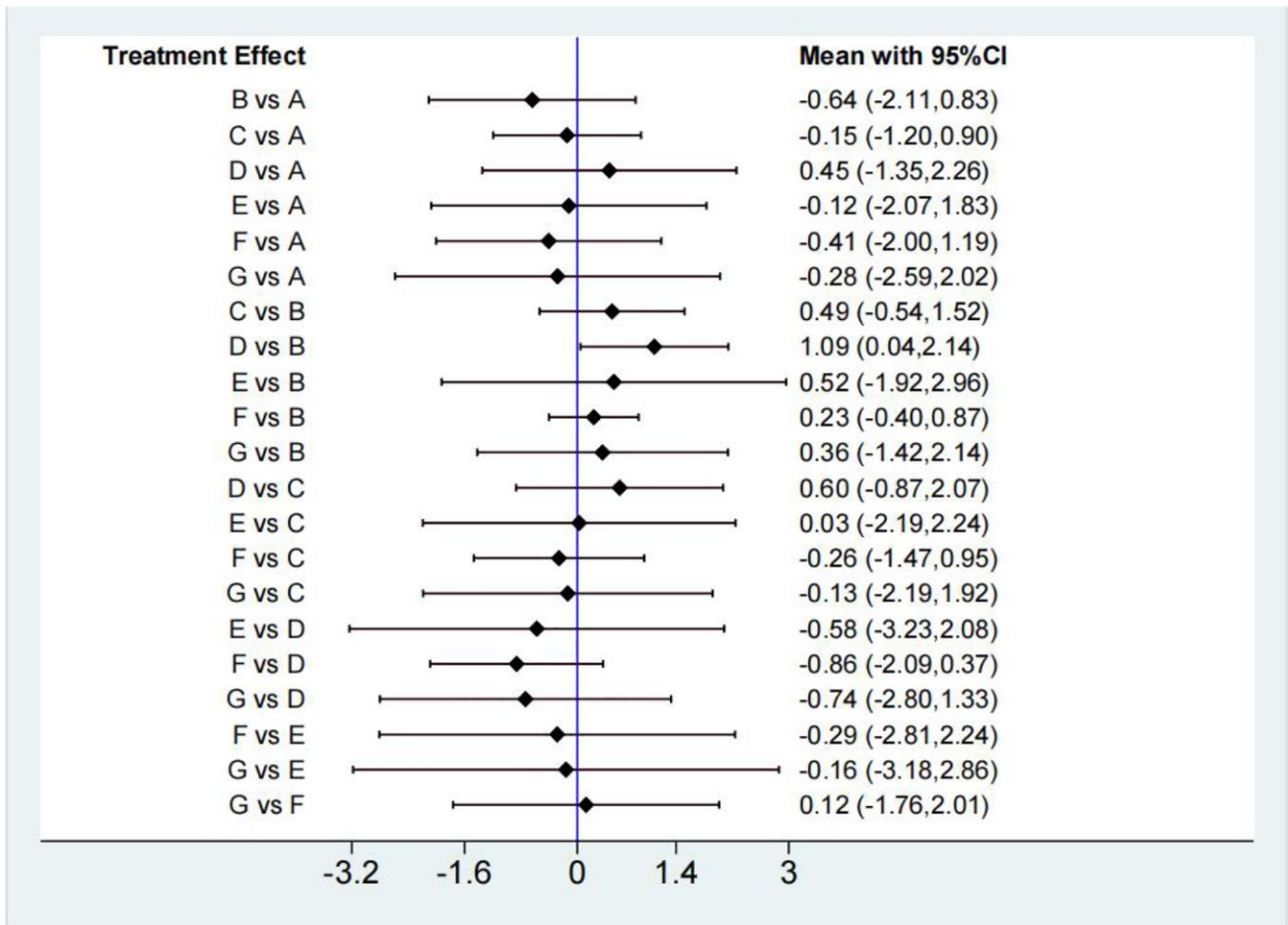
Supplementary Figure 3. Forest plots of hepcidin. Abbreviations: A: placebo/control; B: ESAs; C: daprodustat; D: molidustat; E: vadadustat; F: roxadustat; G: enarodustat.



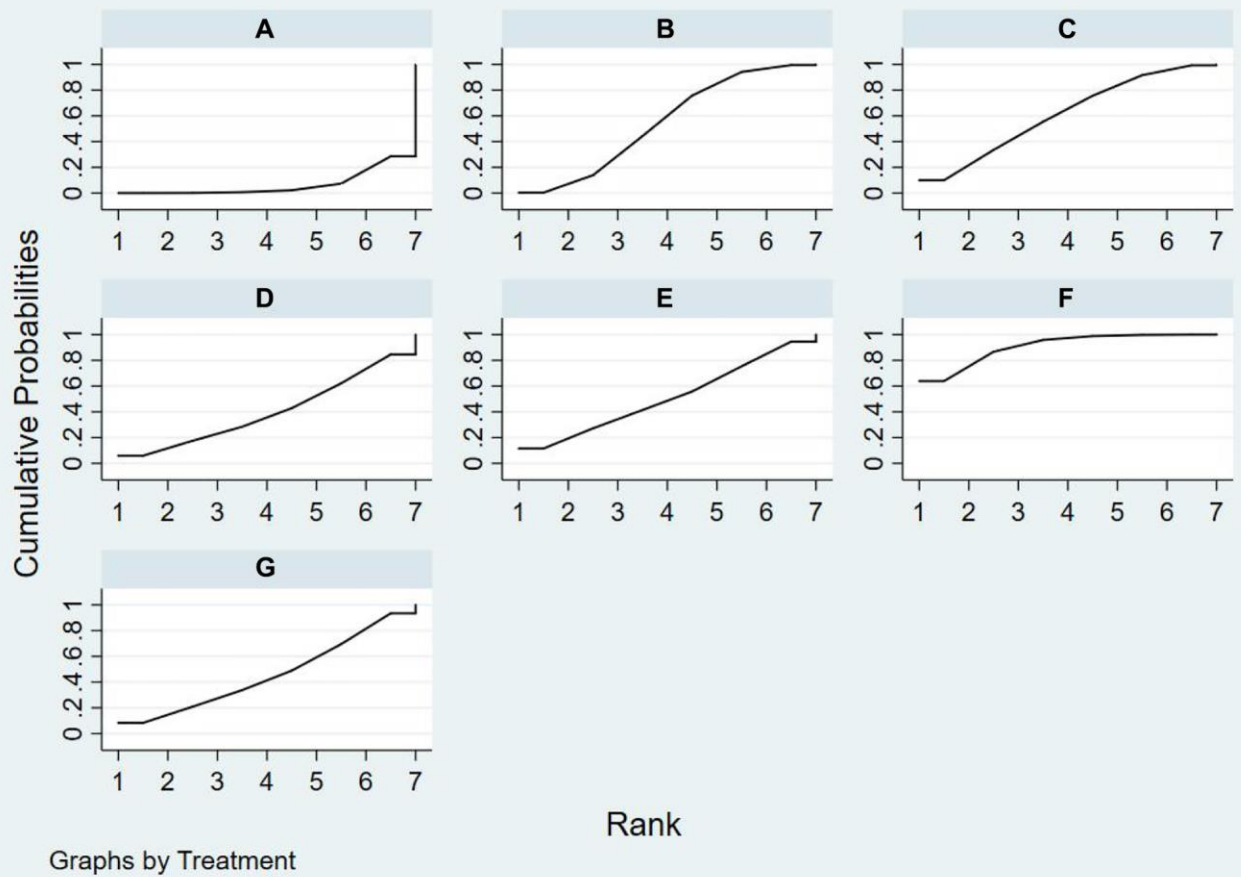
Supplementary Figure 4. Forest plots of TIBC. Abbreviations: A: placebo/control; B: ESAs; C: daprodustat; D: molidustat; E: vadadustat; F: roxadustat; G: enarodustat.



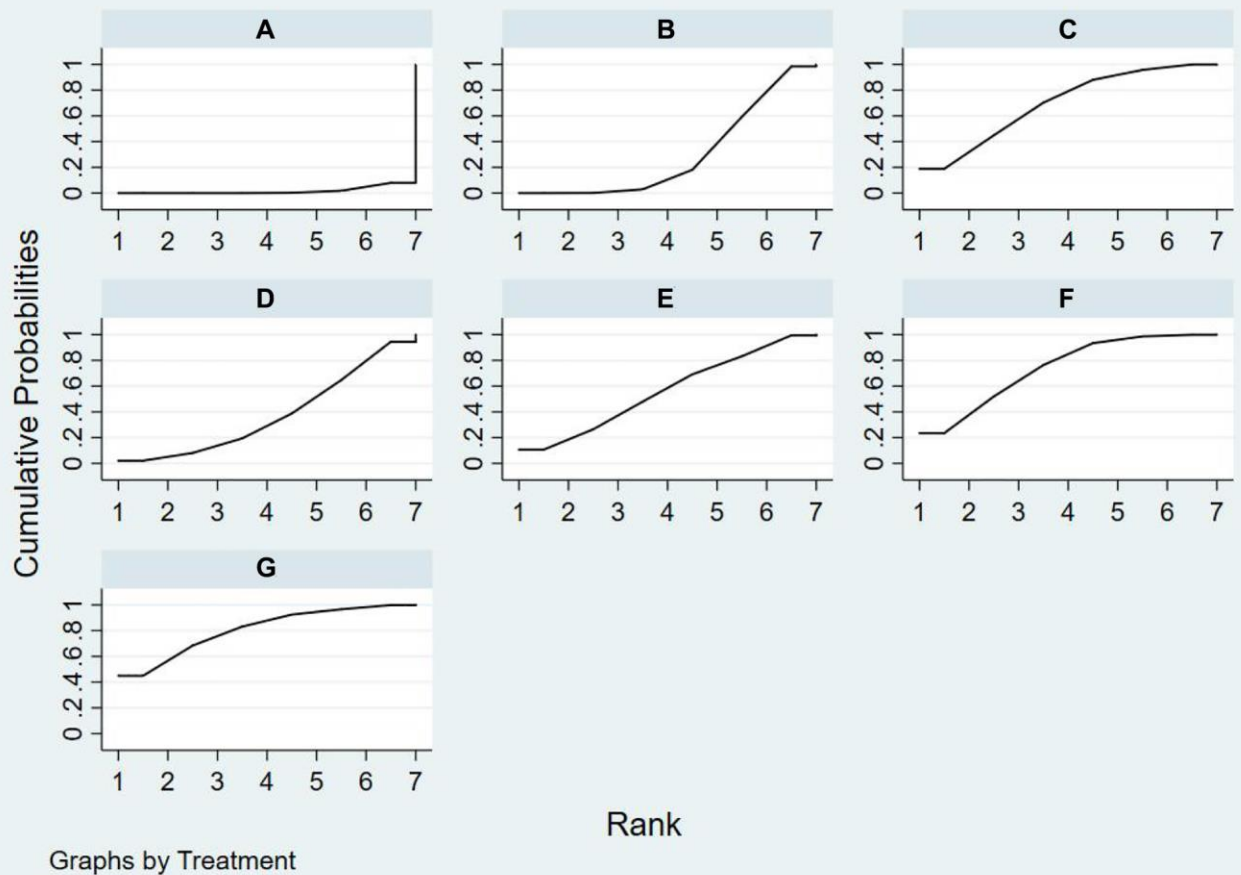
Supplementary Figure 5. Forest plots of TSAT. Abbreviations: A: placebo/control; B: ESAs; C: daprodustat; D: molidustat; E: vadadustat; F: roxadustat; G: enarodustat.



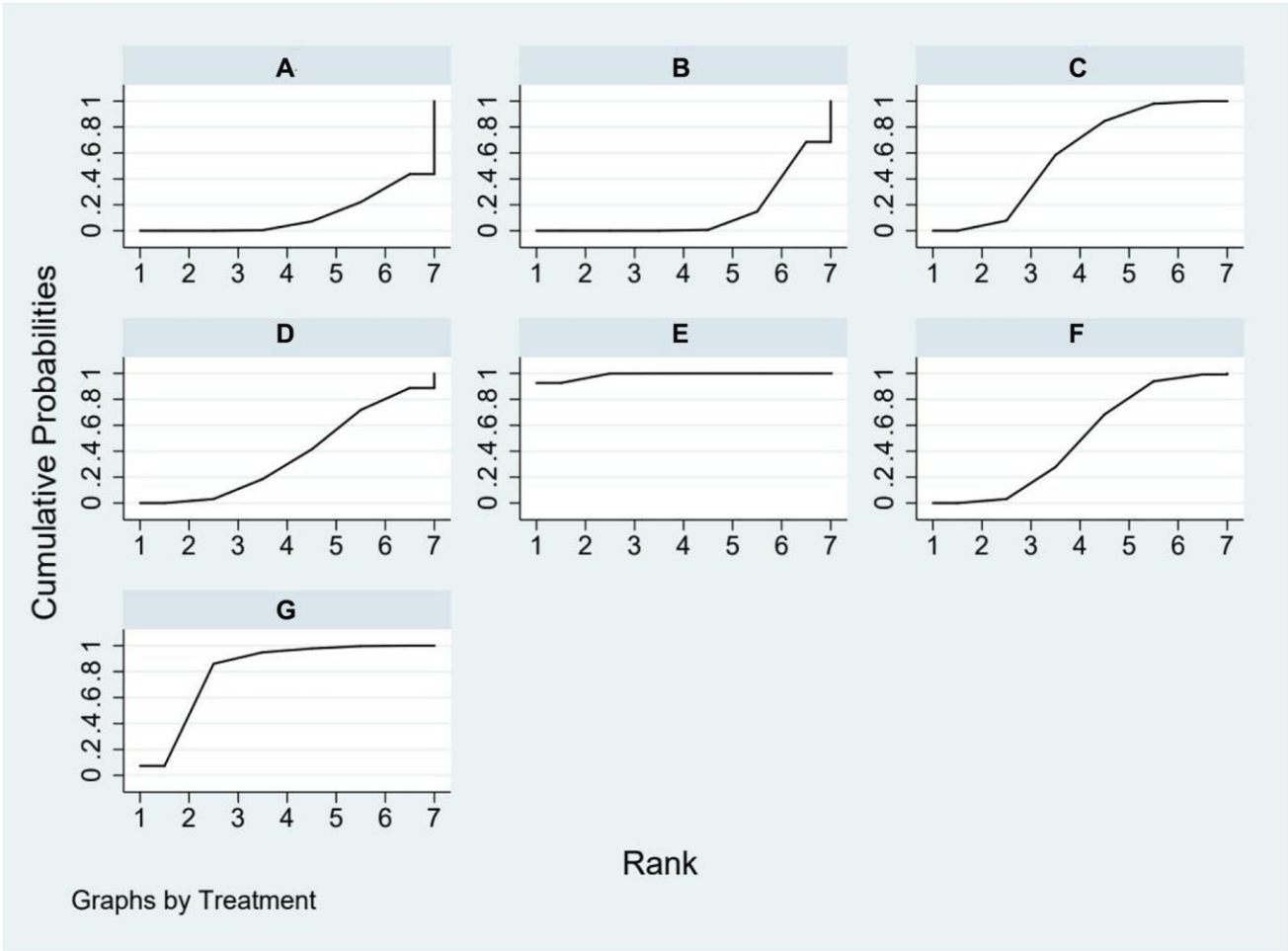
Supplementary Figure 6. Forest plots of serum iron. Abbreviations: A: placebo/control; B: ESAs; C: daprodustat; D: molidustat; E: vadadustat; F: roxadustat; G: enarodustat.



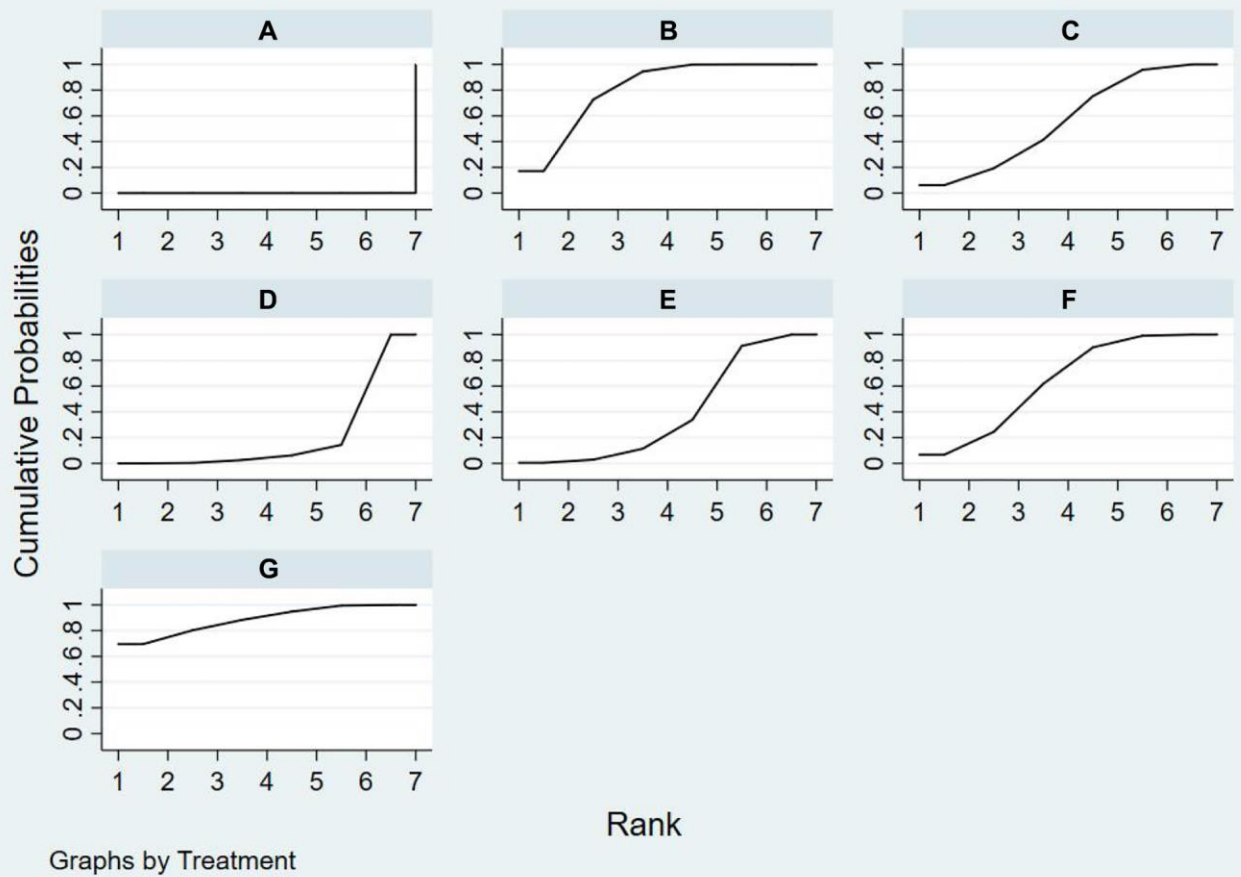
Supplementary Figure 7. The surface under the cumulative ranking curve for ferritin. (A) Placebo/control; (B) ESAs; (C) daprodustat; (D) molidustat; (E) vadadustat; (F) roxadustat; (G) enarodustat.



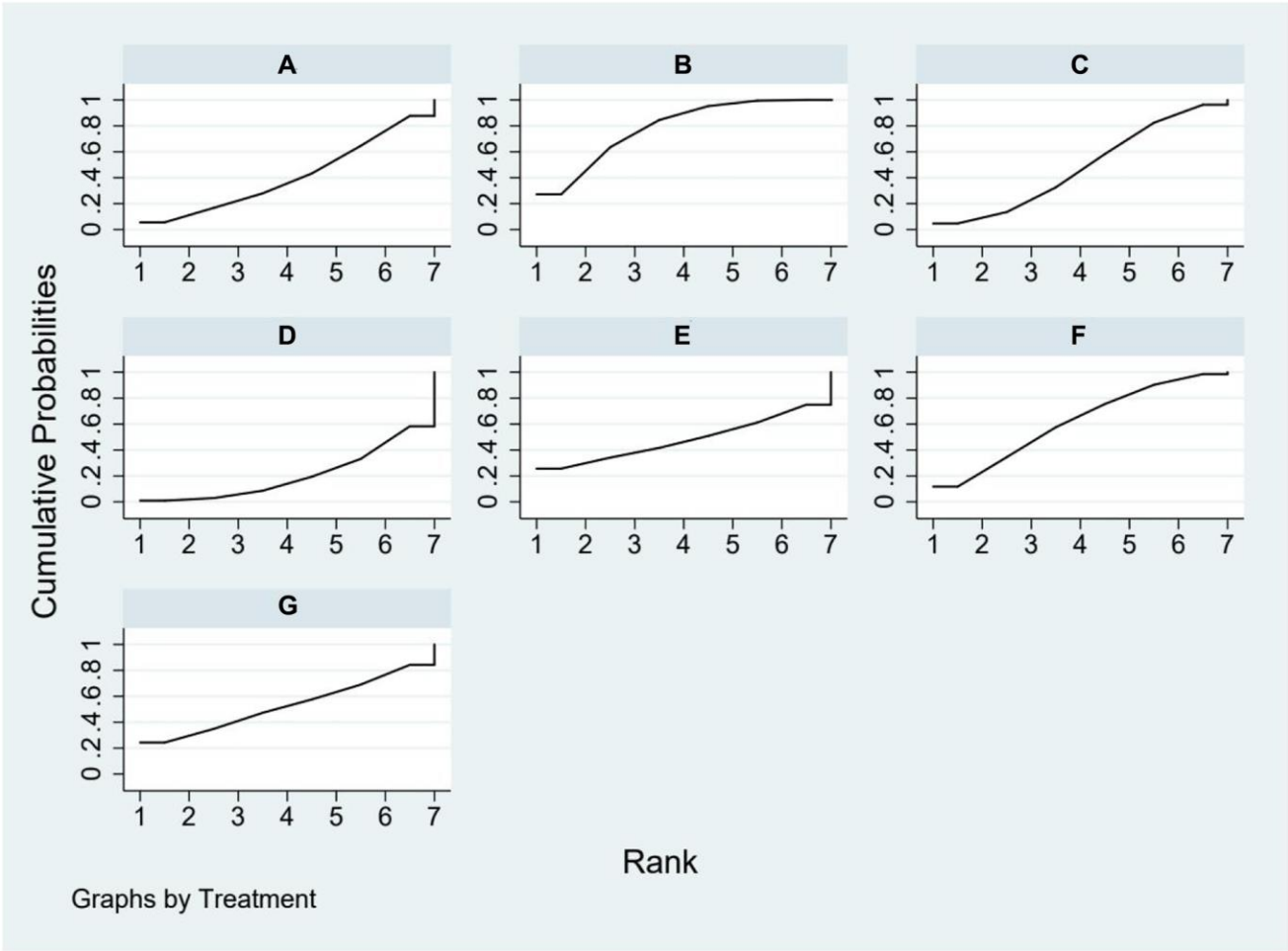
Supplementary Figure 8. The surface under the cumulative ranking curve for hepcidin. (A) Placebo/control; (B) ESAs; (C) daprodustat; (D) molidustat; (E) vadadustat; (F) roxadustat; (G) enarodustat.



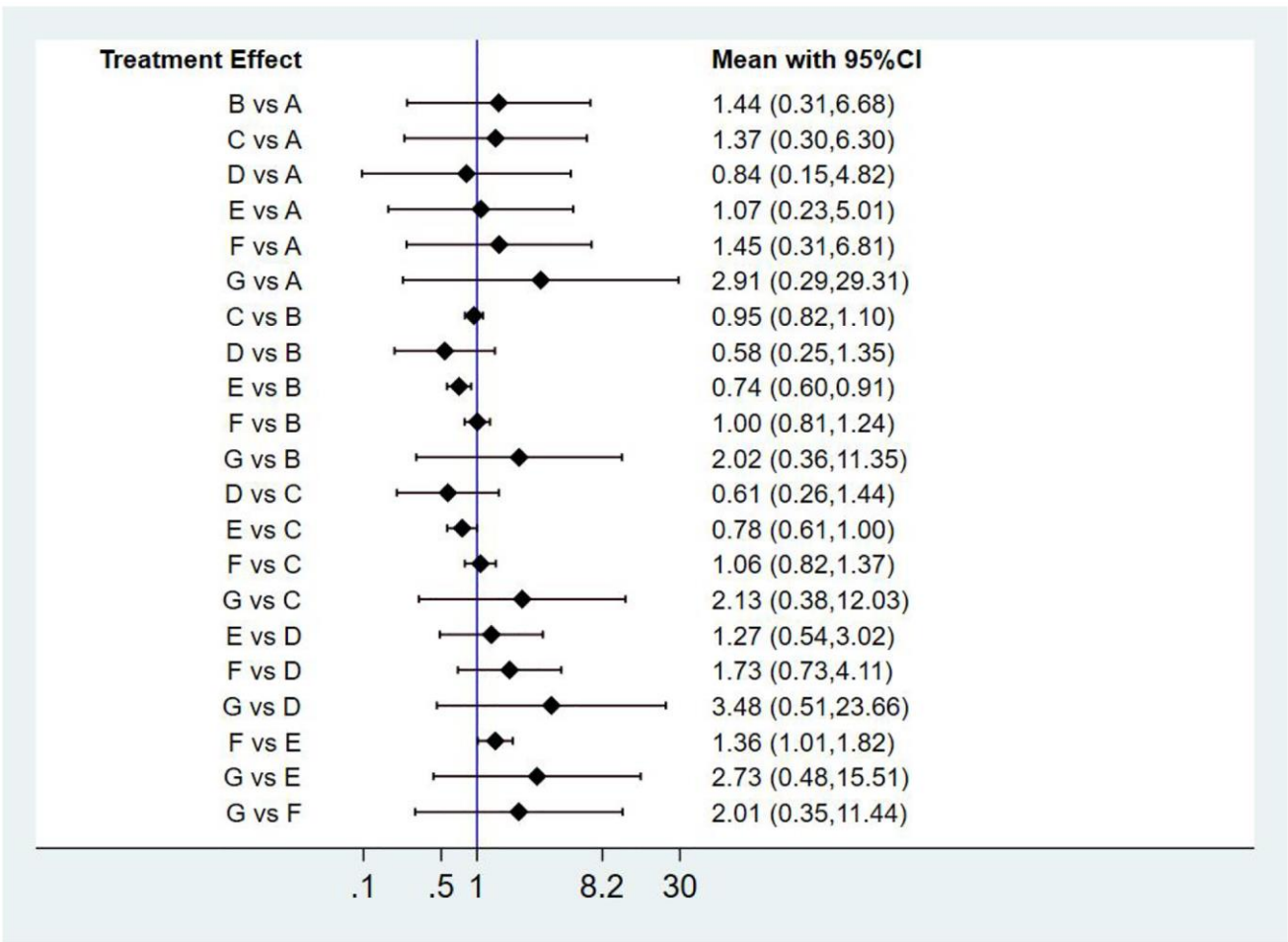
Supplementary Figure 9. The surface under the cumulative ranking curve for TIBC. (A) Placebo/control; (B) ESAs; (C) daprodustat; (D) molidustat; (E) vadadustat; (F) roxadustat; (G) enarodustat.



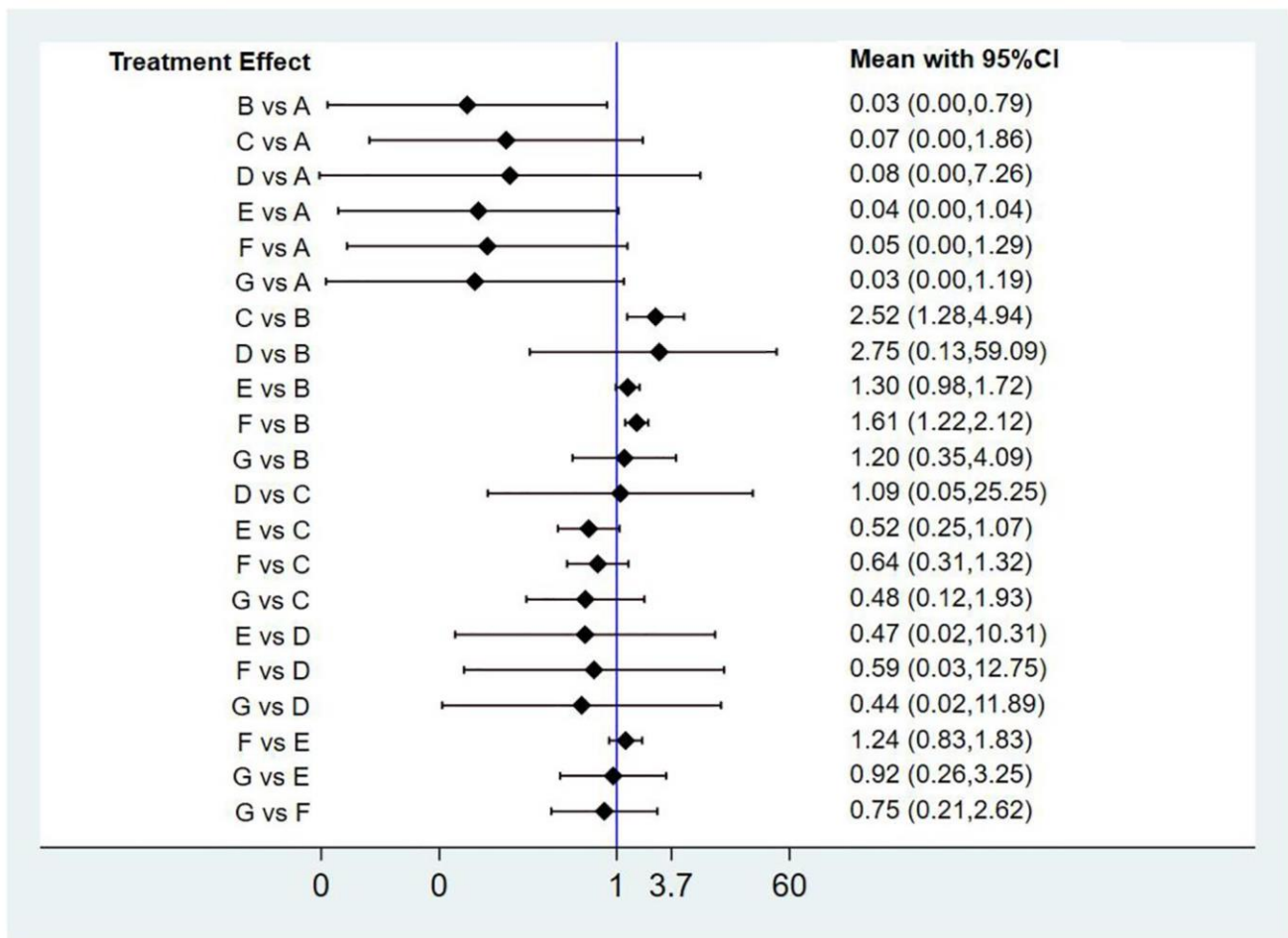
Supplementary Figure 10. The surface under the cumulative ranking curve for TSAT. (A) Placebo/control; (B) ESAs; (C) daprodustat; (D) molidustat; (E) vadadustat; (F) roxadustat; (G) enarodustat.



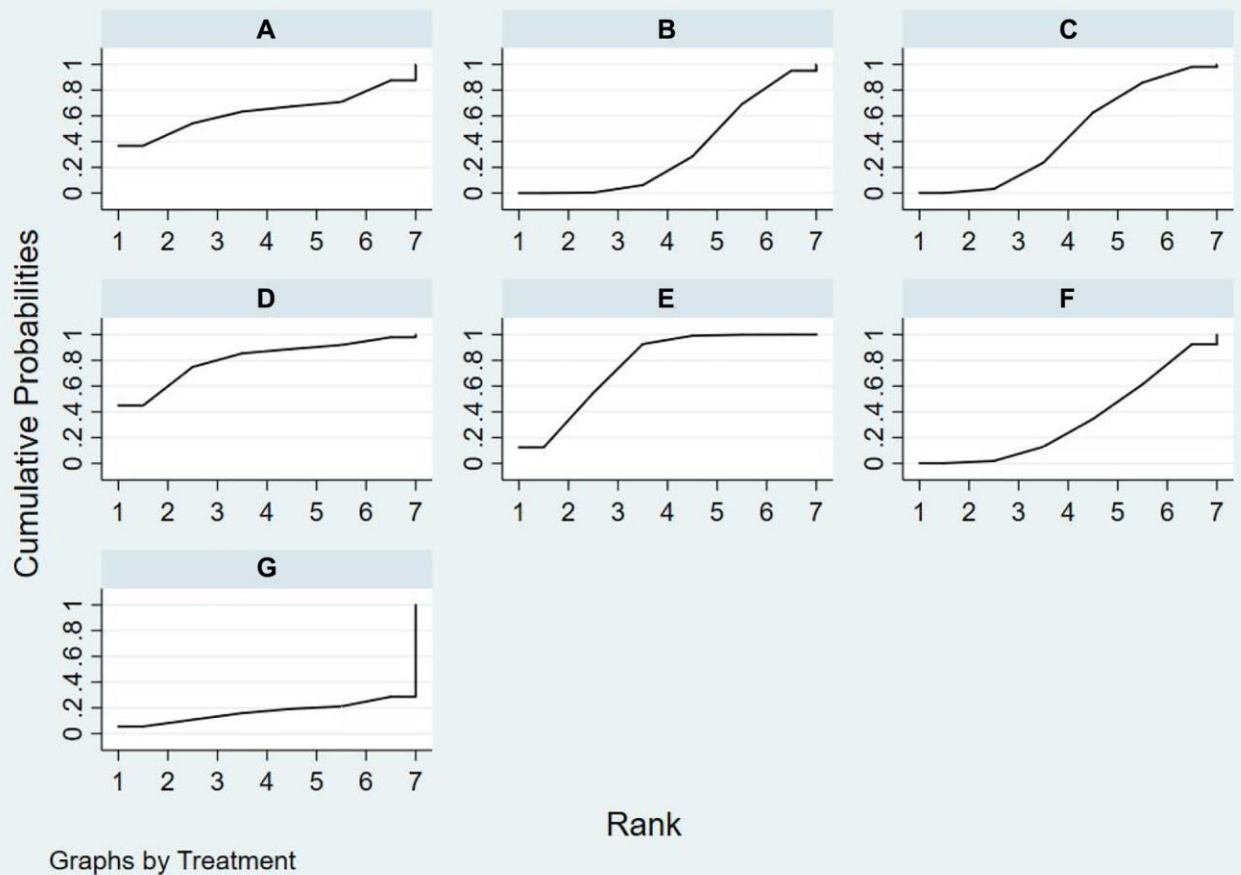
Supplementary Figure 11. The surface under the cumulative ranking curve for serum iron. (A) Placebo/control; (B) ESAs; (C) daprodustat; (D) molidustat; (E) vadadustat; (F) roxadustat; (G) enarodustat.



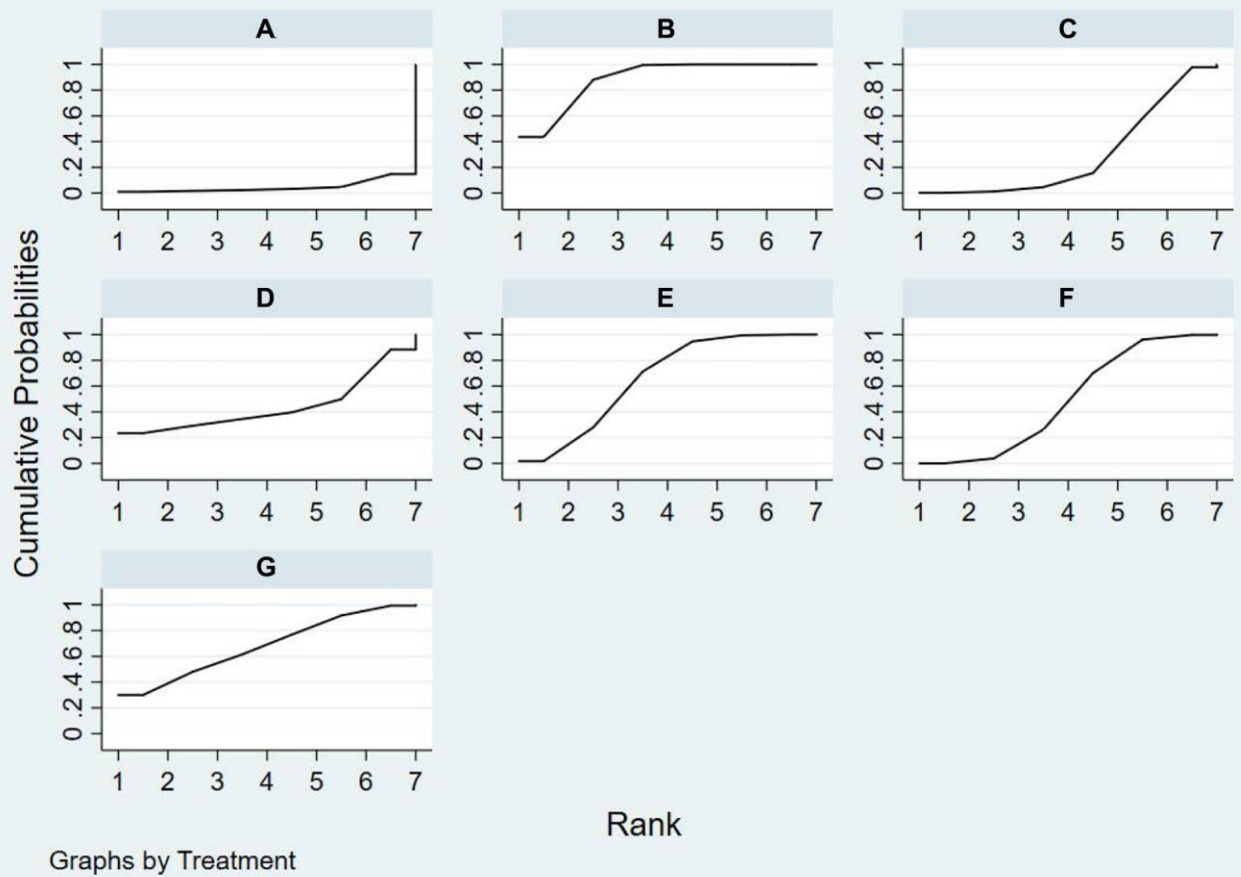
Supplementary Figure 12. Forest plots of hypertension. Abbreviations: A: placebo/control; B: ESAs; C: daprodustat; D: molidustat; E: vadadustat; F: roxadustat; G: enarodustat.



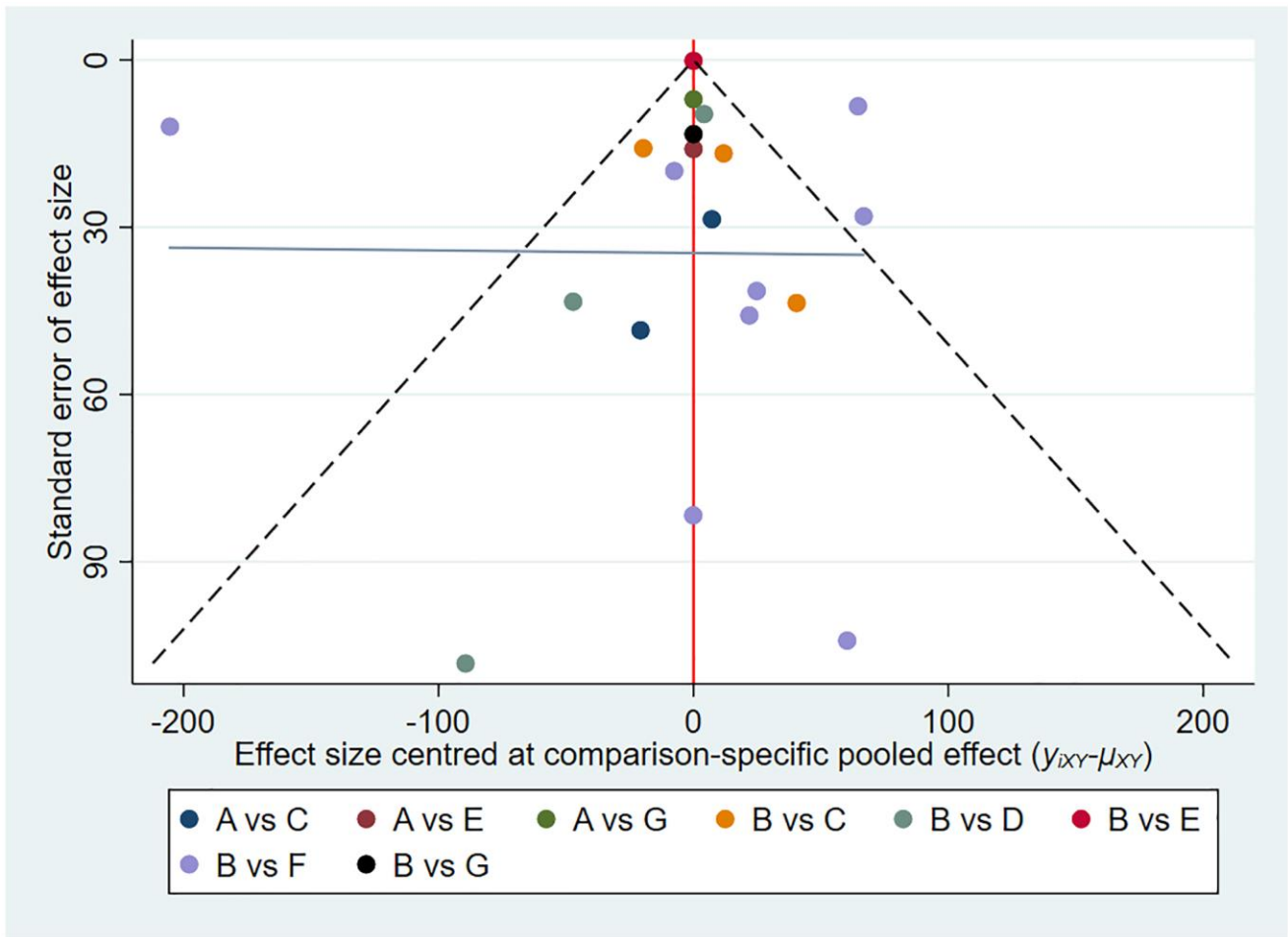
Supplementary Figure 13. Forest plots of thrombosis. Abbreviations: A: placebo/control; B: ESAs; C: daprodustat; D: molidustat; E: vadadustat; F: roxadustat; G: enarodustat.



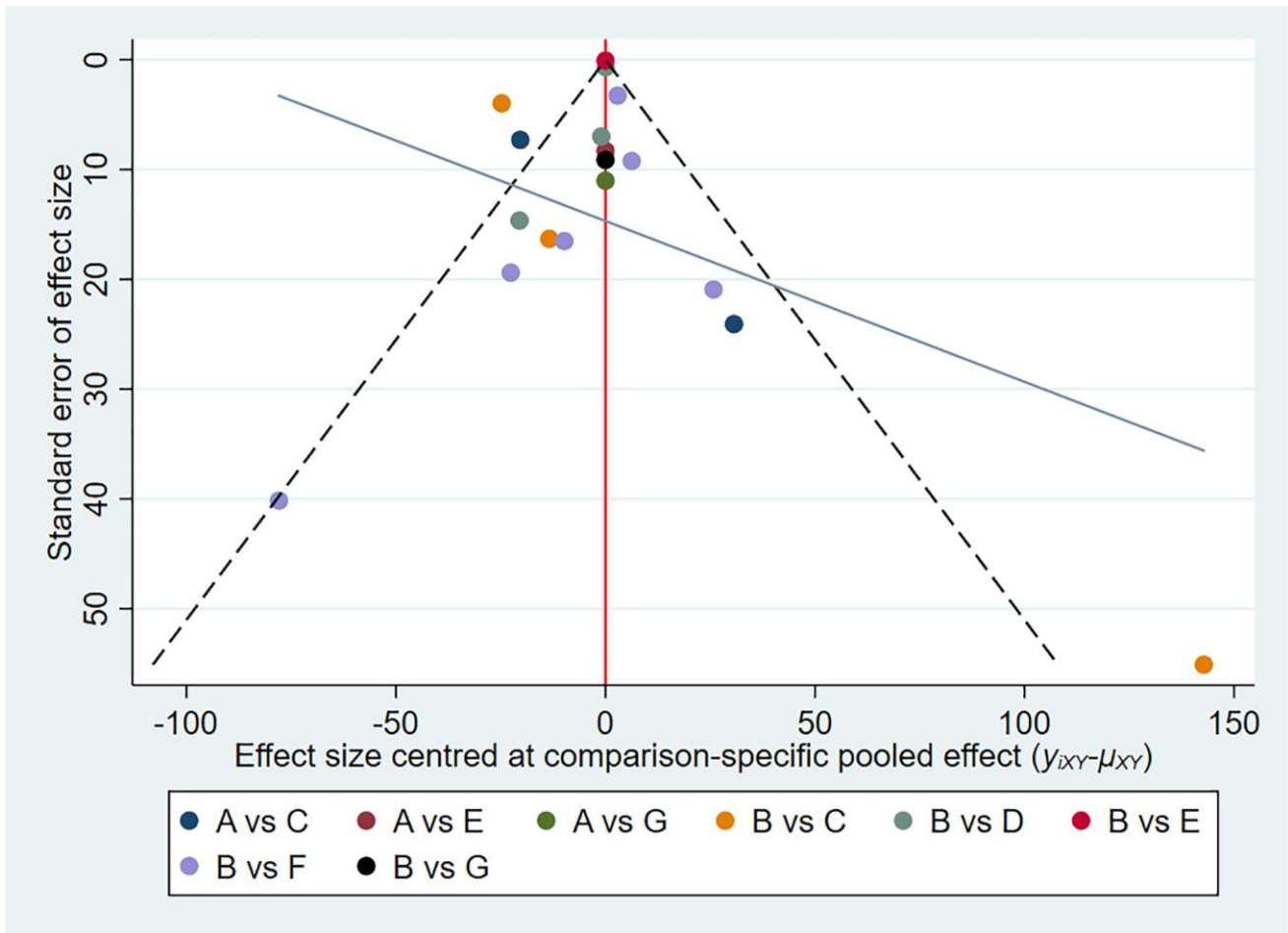
Supplementary Figure 14. The surface under the cumulative ranking curve for hypertension. (A) Placebo/control; (B) ESAs; (C) daprodustat; (D) molidustat; (E) vadadustat; (F) roxadustat; (G) enarodustat.



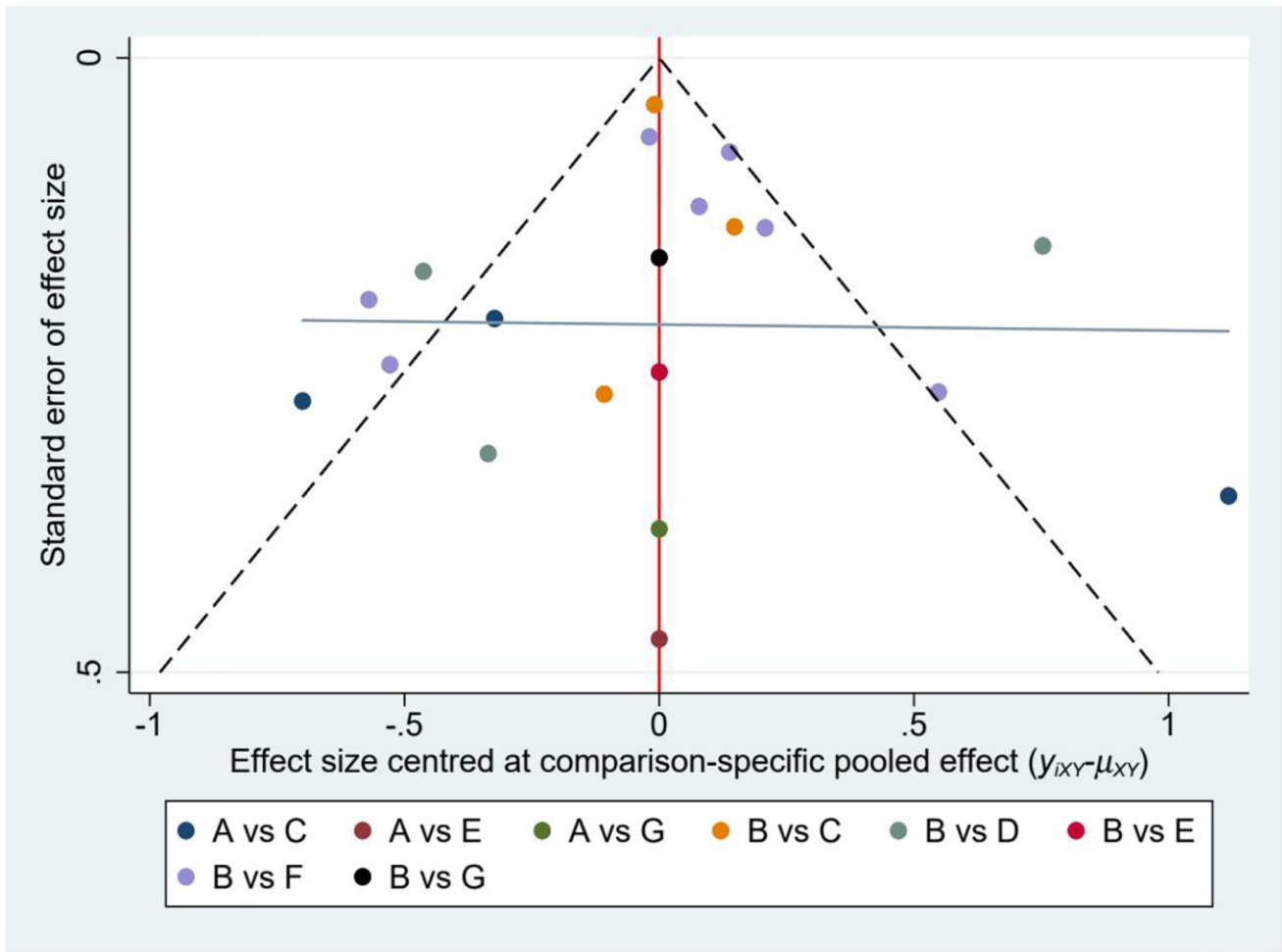
Supplementary Figure 15. The surface under the cumulative ranking curve for thrombosis. (A) Placebo/control; (B) ESAs; (C) daprodustat; (D) molidustat; (E) vadadustat; (F) roxadustat; (G) enarodustat.



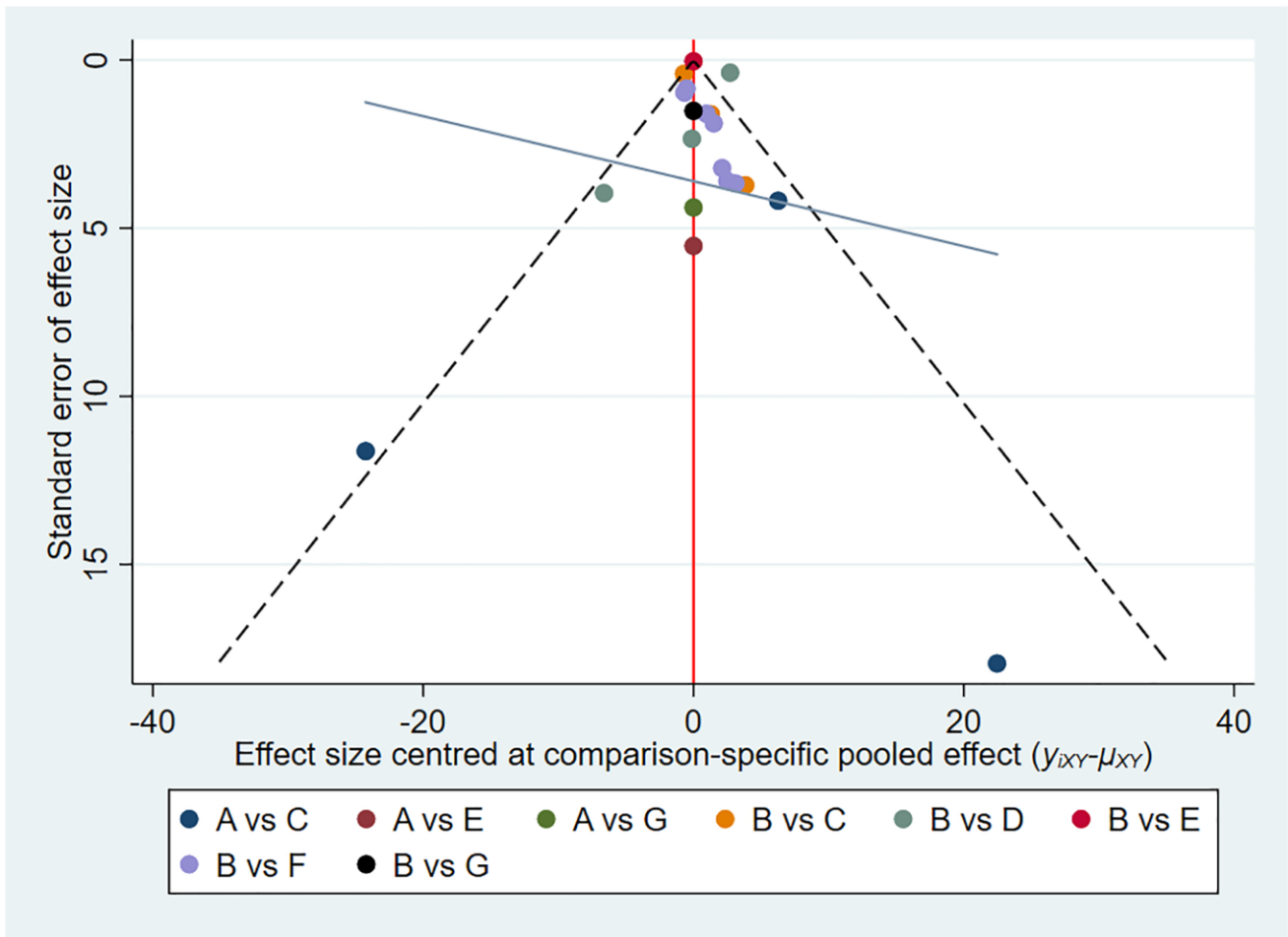
Supplementary Figure 16. Funnel plot assessing ferritin. Abbreviations: A: placebo/control; B: ESAs; C: daprodustat; D: molidustat; E: vadadustat; F: roxadustat; G: enarodustat.



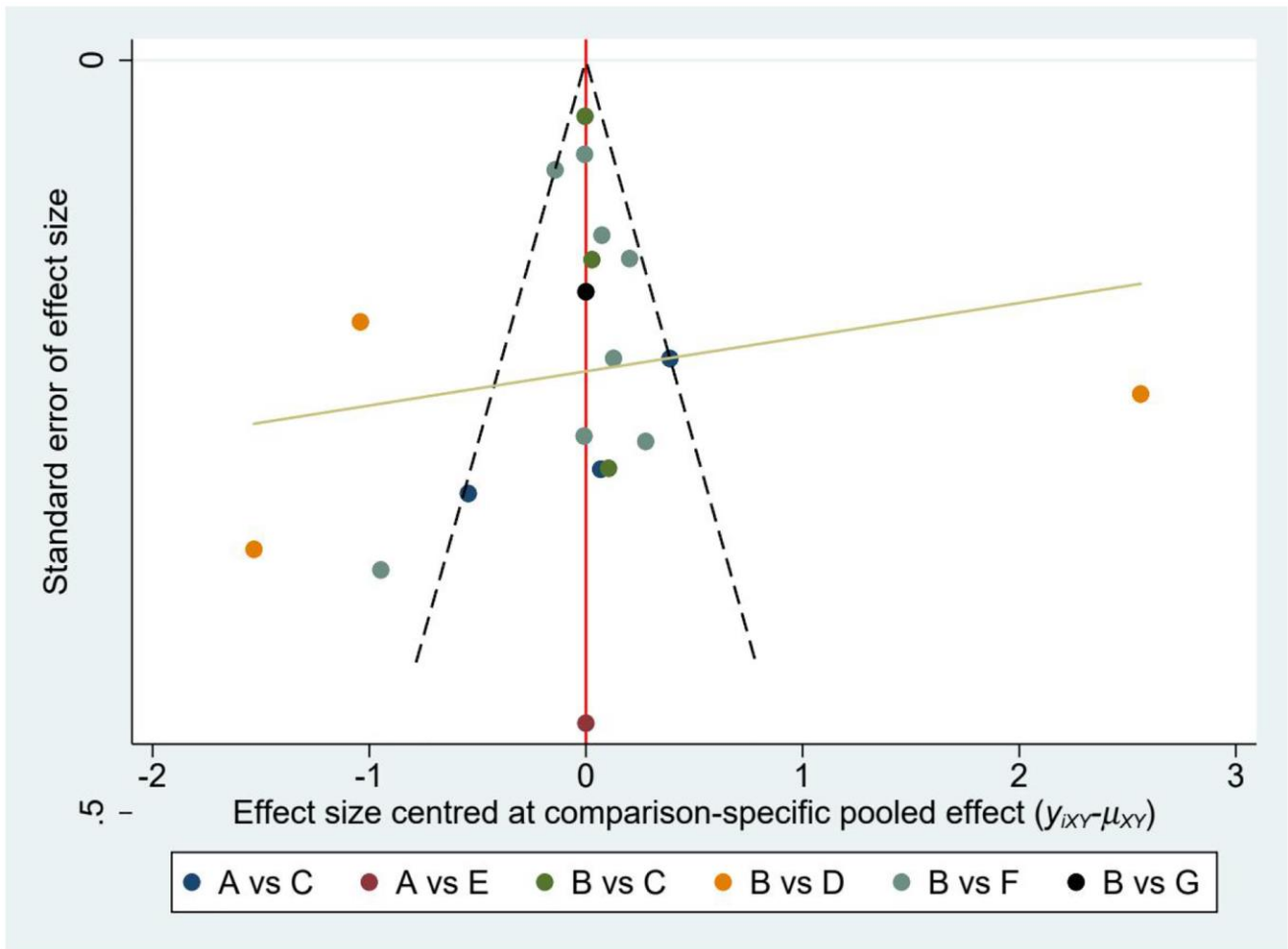
Supplementary Figure 17. Funnel plot evaluating hepcidin. Abbreviations: A: placebo/control; B: ESAs; C: daprodustat; D: molidustat; E: vadadustat; F: roxadustat; G: enarodustat.



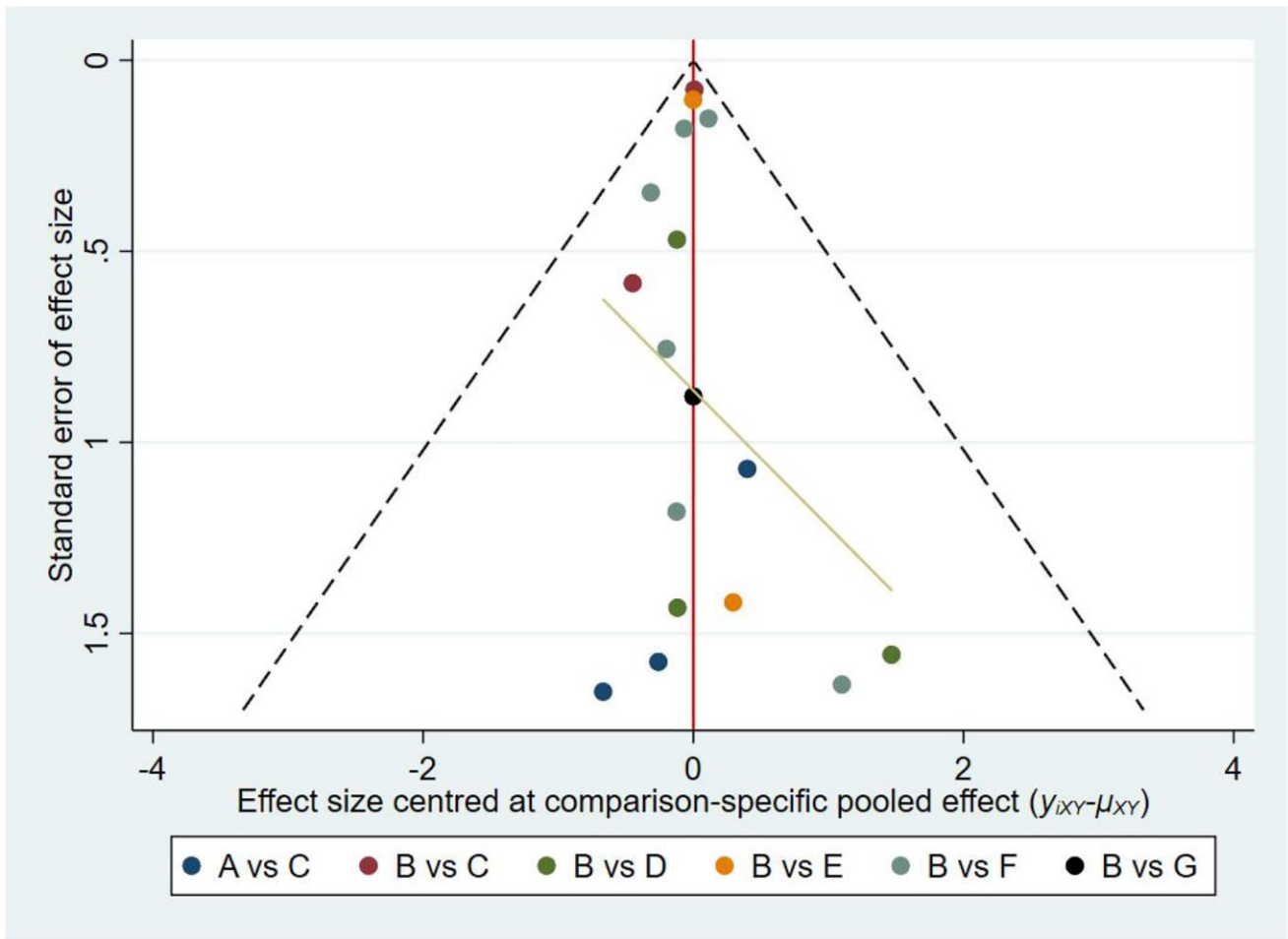
Supplementary Figure 18. Funnel plot evaluating TIBC. Abbreviations: A: placebo/control; B: ESAs; C: daprodustat; D: molidustat; E: vadadustat; F: roxadustat; G: enarodustat.



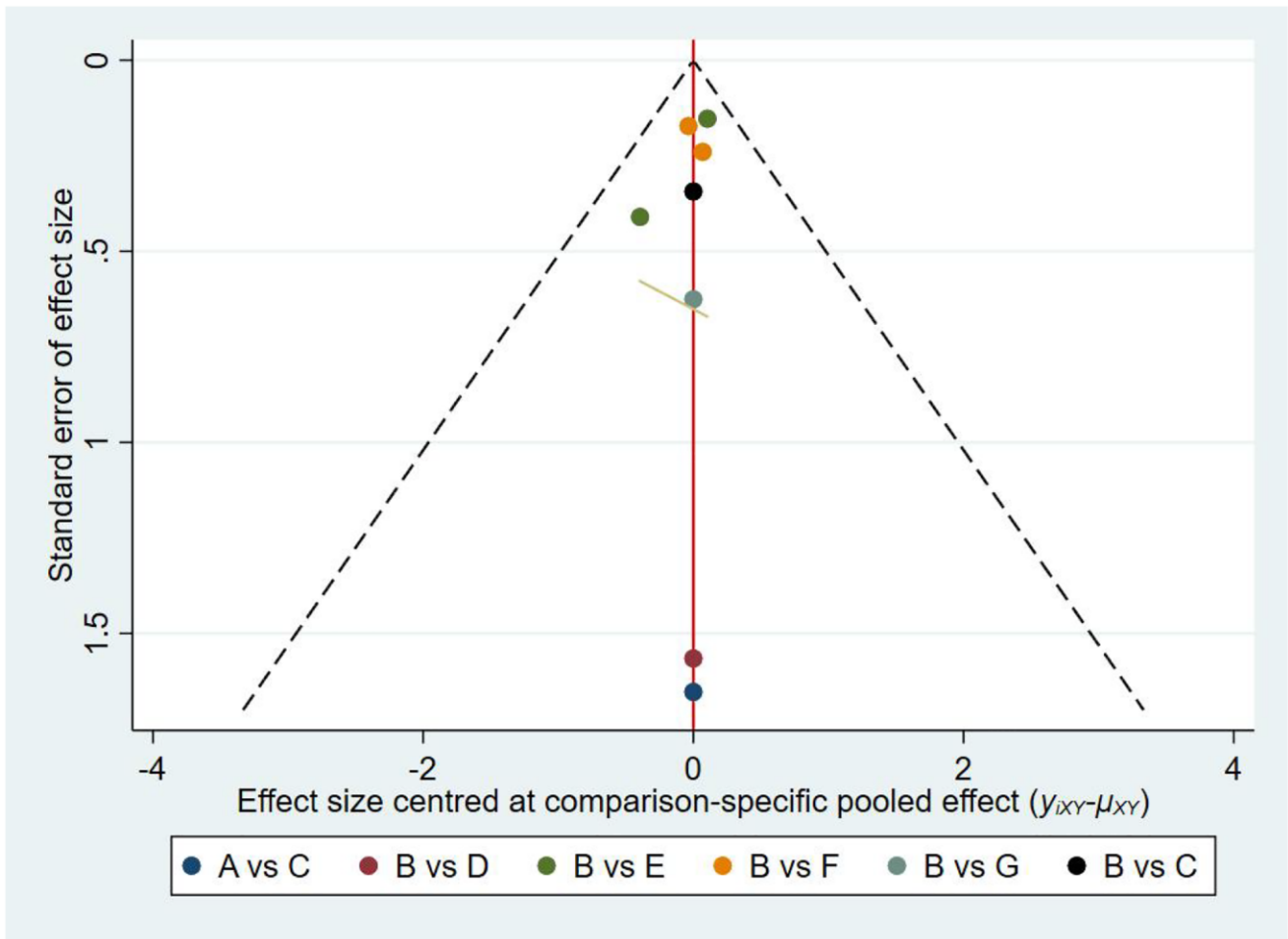
Supplementary Figure 19. Funnel plot evaluating TSAT. Abbreviations: A: placebo/control; B: ESAs; C: daprodustat; D: molidustat; E: vadadustat; F: roxadustat; G: enarodustat.



Supplementary Figure 20. Funnel plot evaluating serum iron. Abbreviations: A: placebo/control; B: ESAs; C: daprodustat; D: molidustat; E: vadadustat; F: roxadustat; G: enarodustat.



Supplementary Figure 21. Funnel plot evaluating hypertension. Abbreviations: A: placebo/control; B: ESAs; C: daprodustat; D: molidustat; E: vadadustat; F: roxadustat; G: enarodustat.



Supplementary Figure 22. Funnel plot evaluating thrombosis. Abbreviations: A: placebo/control; B: ESAs; C: daprodustat; D: molidustat; E: vadadustat; F: roxadustat; G: enarodustat.